



This parts catalog contains the service parts information for the following vehicle models:

Saab
2005 Model 9-2X
2005-2006 Model 9-7X

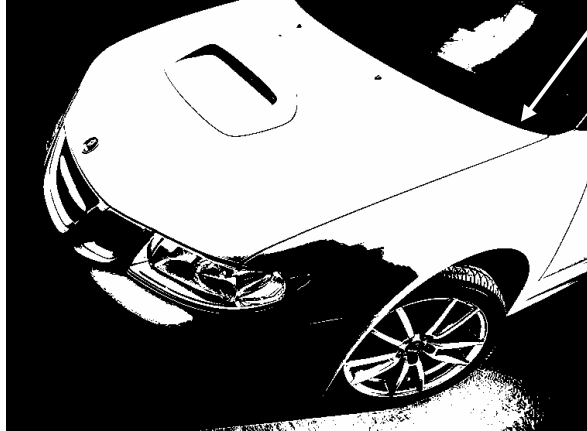
Contents

1	How to Use the Electronic Parts Catalog Using VIN Search	2
2	How to Use the Electronic Parts Catalog Using Menu Search	3
3	Menu Method of Parts & Figure Selection	4
4	Search Method of Parts and Figure Selection	5
5	View Diagram and Parts List	6
6	Adjusting the Illustration	7
7	Linking Elements of the Illustration to the Parts List	8
8	How to Interpret the Illustration	9
9	How to Interpret the Text	10
10	Copying, Pasting, Storing Part Numbers	12
11	Printing Illustrations	13

1 How to use the Electronic Parts Catalog Using VIN Search.

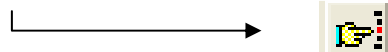
The Saab USA EPC offers the option of identifying the vehicle and all options placed on the vehicle at assembly based on the 17 position VIN and associated historical data stored in the system. This information contains up to 200 option codes linked directly to a single vehicle.

Check the Vehicle Identification (V.I.N) Plate.



Key the **last 8 digits** of the number into the VIN box.

Click on VIN Decode Button



(The VIN Decode Button will populate the Year, Month, and Model Fields. It will also load all option codes and descriptions associated with the vehicle.)

You now can advance to the illustration and text that contains the part or assembly in question. This is done using two general methods:

- Menu Method – Select by Group and Section.
- Search Method – Search by Part Number or Part Name.

See pages 3, 4, and 5 for explanation of Menu and Search methods.

2 How to use the Electronic Parts Catalog Using Menu Search (if VIN is not available).

Select Model, Production Year, and Options from pull-down menus.

The screenshot displays a search interface for an electronic parts catalog. At the top, there is a search bar with a dropdown menu labeled 'Enter VIN'. To the right of this bar is a search icon and the text 'OR'. Further right are two more dropdown menus: one labeled '92x' and another labeled '2004'. Below these is a section for 'SPEED SEARCH ARGUMENT' with a text input field and a 'Search' button. A checkbox labeled 'Show All Part Options' is checked. Below this is a tabbed interface with two tabs: 'Options' (selected) and 'Groups/Sections'. Under the 'Options' tab, there are four dropdown menus: 'Engine:' with a list showing '205 -- 2000CC EMPI DOHC TURBO' and '253 -- 2500CC EMPI SOHC NA'; 'Transmission:' with a list showing 'Select a Transmission'; 'Grade:' with a list showing 'Select a Grade'; and 'Color' with a list showing 'Select a Color'.

You now can display the illustration and text that contains the part or assembly in question. This is done using two general methods:

Menu Method – Select by Group and Section.

Search Method – Search by Part Number, Part Name, or Fig (Illustration).

Show All Part Options – Automatically set when using Menu Search.

See pages 4 and 5 for explanation of Menu and Search methods.

3 Menu Method of Parts & Figure Selection

Select the Part, (Group, Section, Application Method)

Options	Groups/Sections
Groups:	Select a Group
Sections:	00-ENGINE, CLUTCH 01-COOLING, GRILLE, OIL SYSTEM, BELTS AND PULLEYS 02-CHASSIS WIRING, ELECTRICAL SYSTEM, STARTER, GENERATOR, HARNESS 03-FUEL, EXHAUST, CARBURETION, INJECTORS, TURBOCHARGER 04-TRANSMISSION, TRANSFER CASE, BRAKES, AIR COMPRESSOR 05-PARKING BRAKES, REAR AXLE AND DRIVELINE, WHEELS, RIMS, HUBS, ROTORS 06-FRONT AXLE, STEERING GEAR, STEERING PUMP 07-FRAME, SPRINGS, BUMPER 08-FRONT END SHEET METAL, HEATER SYSTEM 09-BODY MOUNTING, AIR CONDITIONING, INSTRUMENT CLUSTER 16-CAB AND BODY PARTS, WIPERS, MIRRORS, DOORS, TRIM, SEAT BELTS 17-LOAD CARRIER PARTS 21-ACCESSORIES
Vehicle	
Engine	
Transm	
Grade:	AERO -- AERO
Body:	W Wagon
Drive Train:	4W Fulltime 4WD

If you initially selected the vehicle using the VIN search method, application selection will be minimal as the system is designed to filter out all information not applying to the various option codes of the vehicle.

If you initially selected the vehicle using the Menu method, you may have to choose from two or more applications to find the part or assembly required.

4 Search Method of Parts & Figure Selection

The system provides two additional quick and easy ways to find the part in question.

Key the Search Word. In this example the word is **Pump**.

Select the Search Option:

Part Number - Will go directly to the Figure (Illustration) or, if part number is contained in multiple Illustrations, will provide pick-list to choose from.

Part/Section Name – Part name (ex: Fuel Pump), Abbreviations (ex: M/CYL) may be keyed. Pick-list of all matching Section Names and part names will be presented.

Click **Search** box.

Select (double click) the Section or Part Desired. In the above example, we selected the **Water Pump Complete**.

5 View Diagram and Parts List

Click on the Parts List tab to display the full illustration image and parts list.

Options	Groups/Sections	Parts List																																																																																																		
		<table border="1"> <thead> <tr> <th>Key</th> <th>*</th> <th>Part #</th> <th>Description</th> <th>FrYr</th> <th>ToYr</th> <th>▲</th> </tr> </thead> <tbody> <tr> <td>0104S</td> <td>A</td> <td>32005265</td> <td>FLANGE BOLT</td> <td>20040</td> <td></td> <td></td> </tr> <tr> <td>0104S</td> <td>B</td> <td>32005268</td> <td>FLANGE BOLT</td> <td>20040</td> <td></td> <td></td> </tr> <tr> <td>11060</td> <td></td> <td>32005440</td> <td>COVER-THERMO</td> <td>20040</td> <td></td> <td></td> </tr> <tr> <td>14065</td> <td></td> <td>32005703</td> <td>PIPE COMPLETE-WATER BYPASS</td> <td>20040</td> <td></td> <td></td> </tr> <tr style="background-color: yellow;"> <td>></td> <td></td> <td>21111</td> <td>32005906</td> <td>WATER PUMP COMPLETE</td> <td>20040</td> <td></td> </tr> <tr> <td></td> <td></td> <td>21114</td> <td>32005907</td> <td>GASKET-WATER PUMP</td> <td>20040</td> <td></td> </tr> <tr> <td></td> <td></td> <td>21116</td> <td>32005908</td> <td>SEALING-WATER PUMP</td> <td>20040</td> <td></td> </tr> <tr> <td></td> <td></td> <td>21200</td> <td>32005912</td> <td>THERMO ASSEMBLY</td> <td>20040</td> <td></td> </tr> <tr> <td></td> <td></td> <td>21210</td> <td>32005913</td> <td>COVER-THERMO</td> <td>20040</td> <td></td> </tr> <tr> <td></td> <td></td> <td>21236</td> <td>32005914</td> <td>FLANGE BOLT</td> <td>20040</td> <td></td> </tr> <tr> <td></td> <td></td> <td>A10693</td> <td>32005915</td> <td>FLANGE BOLT</td> <td>20040</td> <td></td> </tr> <tr> <td></td> <td></td> <td>F91801</td> <td>32005916</td> <td>FLANGE BOLT</td> <td>20040</td> <td></td> </tr> <tr> <td></td> <td></td> <td>F92209</td> <td>32005917</td> <td>FLANGE BOLT</td> <td>20040</td> <td></td> </tr> </tbody> </table>	Key	*	Part #	Description	FrYr	ToYr	▲	0104S	A	32005265	FLANGE BOLT	20040			0104S	B	32005268	FLANGE BOLT	20040			11060		32005440	COVER-THERMO	20040			14065		32005703	PIPE COMPLETE-WATER BYPASS	20040			>		21111	32005906	WATER PUMP COMPLETE	20040				21114	32005907	GASKET-WATER PUMP	20040				21116	32005908	SEALING-WATER PUMP	20040				21200	32005912	THERMO ASSEMBLY	20040				21210	32005913	COVER-THERMO	20040				21236	32005914	FLANGE BOLT	20040				A10693	32005915	FLANGE BOLT	20040				F91801	32005916	FLANGE BOLT	20040				F92209	32005917	FLANGE BOLT	20040	
Key	*	Part #	Description	FrYr	ToYr	▲																																																																																														
0104S	A	32005265	FLANGE BOLT	20040																																																																																																
0104S	B	32005268	FLANGE BOLT	20040																																																																																																
11060		32005440	COVER-THERMO	20040																																																																																																
14065		32005703	PIPE COMPLETE-WATER BYPASS	20040																																																																																																
>		21111	32005906	WATER PUMP COMPLETE	20040																																																																																															
		21114	32005907	GASKET-WATER PUMP	20040																																																																																															
		21116	32005908	SEALING-WATER PUMP	20040																																																																																															
		21200	32005912	THERMO ASSEMBLY	20040																																																																																															
		21210	32005913	COVER-THERMO	20040																																																																																															
		21236	32005914	FLANGE BOLT	20040																																																																																															
		A10693	32005915	FLANGE BOLT	20040																																																																																															
		F91801	32005916	FLANGE BOLT	20040																																																																																															
		F92209	32005917	FLANGE BOLT	20040																																																																																															

WATER PUMP

Image #
1 of 1

G21 WATER PUMP 1/1 04/12/29 13:30

6 Adjusting the Illustration



Enlarge a Portion of the Illustration

Click on the plain magnifying glass to enlarge a portion of the illustration. Move the mouse cursor over the image to highlight different sections.

Click on the glass again to remove the magnification.



Enlarge the Entire Illustration

Click on this button to enlarge the entire image.



Reduce the Entire Illustration

Click on this button to reduce the entire image.



Align Image to Fit Window

Click on this button if image needs to fit window better.

If there is more than a single Figure (illustration) for the application, use the left and right arrows:



7 Linking Illustration to Parts List

Each part key number in the illustration is linked to the proper line(s) in the text listing. Simply click on the gray box surrounding the part key number in question, the box will change to yellow and the proper text line(s) will be highlighted.

In addition, if you click on any text line in the text box, the corresponding key number(s) will change to yellow.

The screenshot displays the SAAB CARS ELECTRONIC PARTS CATALOG software. The interface includes a search bar at the top with filters for '5G050380', 'OR 92X', and '2004'. Below the search bar is a 'Parts List' table with the following data:

Key	* Part #	Description	FrYr	ToYr
0104S	A 32005265	FLANGE BOLT	20040	
0104S	B 32005268	FLANGE BOLT	20040	
11060	32005440	COVER-THERMO	20040	
14065	32005703	PIPE COMPLETE-WATER BYPASS	20040	
21111	32005906	WATER PUMP COMPLETE	20040	
21114	32005907	GASKET-WATER PUMP	20040	
21116	32005908	SEALING-WATER PUMP	20040	
21200	32005912	THERMO ASSEMBLY	20040	
21210	32005917	THERMO AND GASKET ASSEMBL	20040	
21236	32005918	GASKET-THERMO	20040	
A10693	32008152	BOLT	20040	
F91801	32008359	HOSE CLAMP	20040	
F92209	32008362	HOSE CLAMP	20040	
H612011	32008502	HOSE	20040	
H615182	32008504	HOSE	20040	

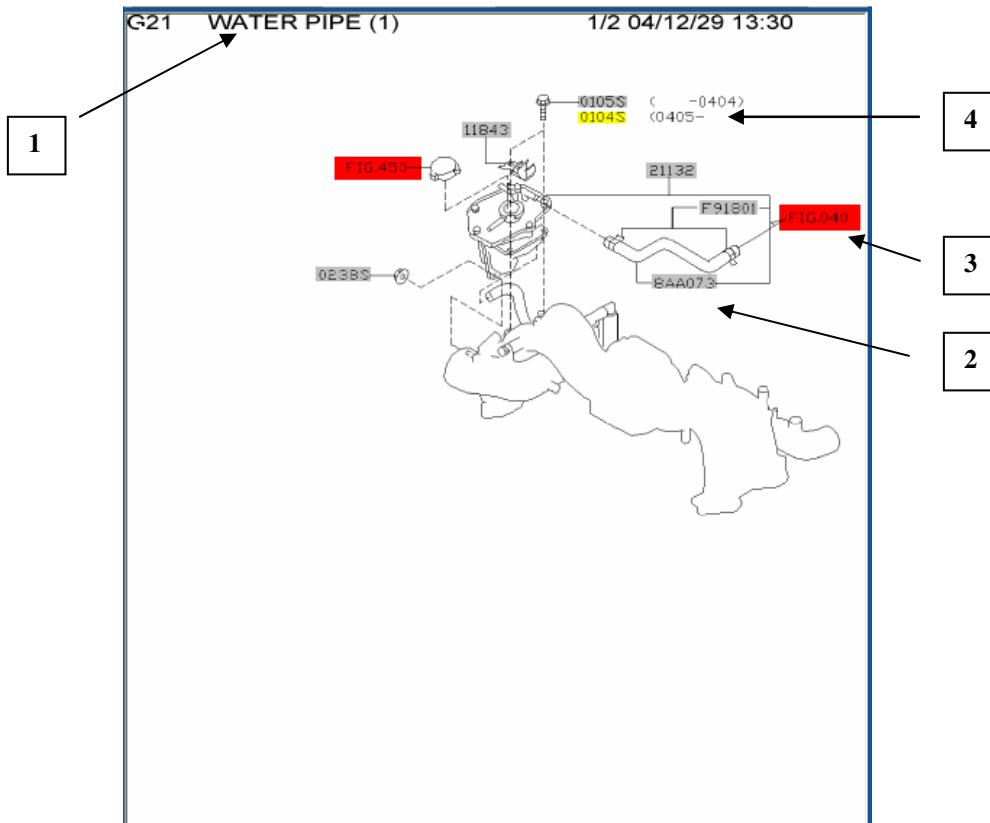
The illustration on the right shows a technical drawing of a water pump assembly. A red box labeled 'FIG.036' is positioned above the drawing. A black arrow points from the red box to the '21111' key number in the parts list. Another black arrow points from the '21111' key number in the parts list to the corresponding part in the illustration.

See Fig. xxx.

Often, the See Fig No is included one or more times in an illustration for reference. When you click on the red box surrounding the figure number, the system will take you to that figure and display it.

To return to the original illustration & text, click **Back**.

8 How to Interpret the Illustration



1. Illustration Title.

The first line of the title contains a generic name (s) for the item (s) illustrated. The second line of the title identifies the specific application; i.e. engine model, type of transmission, etc.

2. Key No.

The Key Number connects the illustrated part to the appropriate text, both visually and electronically. The Key Number will be highlighted in the color Yellow to ease in recognition. Clicking on the Key Number will highlight the corresponding text in the text list.

3. SEE FIG NO. XXX.

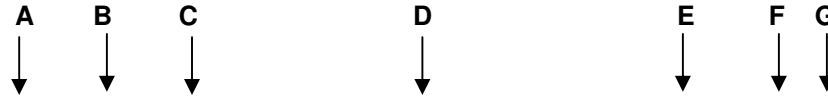
Items shown as a point of reference are not identified with a part number. These items are shown because of the way they fit within the illustration. SEE FIG NO is highlighted in RED and is directly connected to the referenced FIG electronically. Clicking on the SEE FIG NO frame/box will display the referenced FIG.

4. Application Years.

Two different key numbers are assigned to this part depending on years covered.

9 How to interpret the Text.

Each illustration displayed is accompanied by a corresponding parts list.



Key	*	Part #	Description	FrYr	ToYr	Qty
0104S		32005274	FLANGE BOLT	2004		02
0105S		32005280	FLANGE BOLT	2004		02
0238S		32005320	FLANGE NUT	2004		01
> 0923S	A	32005399	HOSE CLAMP	2004		02
0923S	B	32005402	HOSE CLAMP	2004		02
11843		32005471	STAY COMPLETE-PCV HOSE	2004		01

A. Key.

The Key connects the part information to the appropriate element in the illustration. Clicking on the Key also highlights the element for easy reference.

B. *

When two or more items are identified by the same Key Number, an alphabetical character (i.e. "A", "B", "C" etc.) will be used to identify the part number to the applicable illustration. This character will be shown in this column and to the right of the Key Number in the illustration.

C. Part #.

The Part Number

D. Description.

The actual description of the part.

E. Fr Yr

Beginning of applicable period, year & month (i.e. 199510 = October 1995).

F. To Yr

End of applicable period, year & month (i.e. 199606 = June 1996). (999912 indicates to present).

G. Qty

The quantity of the part per that particular application for one vehicle is indicated. As to the component of a particular assembly, the quantity per one assembly is indicated. In those cases where the required quantity is unknown (i.e. shims), "AR" (as required) will be indicated.

Notes

Any additional information pertaining to the characteristics of the item; i.e. size, shape, color, etc. will be listed in the Notes window.

10

Copying, Pasting, Storing Part Numbers.

Key	*	Part #	Description	FrYr	ToYr
• 0311S		32005329	WASHER	20040	
11051		32005439	PLUG-CYLINDER HEAD	20040	
11071		32005420	SEAL RING-CYLINDER BLOCK	20040	20040
> 11071		32009789	SEAL RING-CYLIN		
15010		32005743	OIL PUMP ASSEMI		
15015		32005745	ROTOR-OIL PUMP		
• 15016		32005747	ROTOR-OIL PUMP		
15019		32005751	VALVE-OIL RELIEF		
15020		32005752	SPRING-RELIEF VALVE,ENGINE	20040	
• 15021		32005754	PLUG-OIL RELIEF	20040	

- Copy
- Unselect All
- Add To Shopping Cart
- Open Shopping Cart
- Send To DMS

You may select one or more parts in the parts list by holding down the Ctrl key and clicking on the desired parts. Clicking the right mouse button will provide a list of available options.

Copy.

Selecting this option will place the part(s) information into the operating system to be pasted into any application such as MS Word, Notepad, Outlook, etc. This will allow you to print, e-mail, or fax the parts information.

Add to Shopping Cart.

Selecting this option will add the part(s) information to the EPC internal shopping cart. This accumulated information can later be printed, faxed, e-mailed, etc.

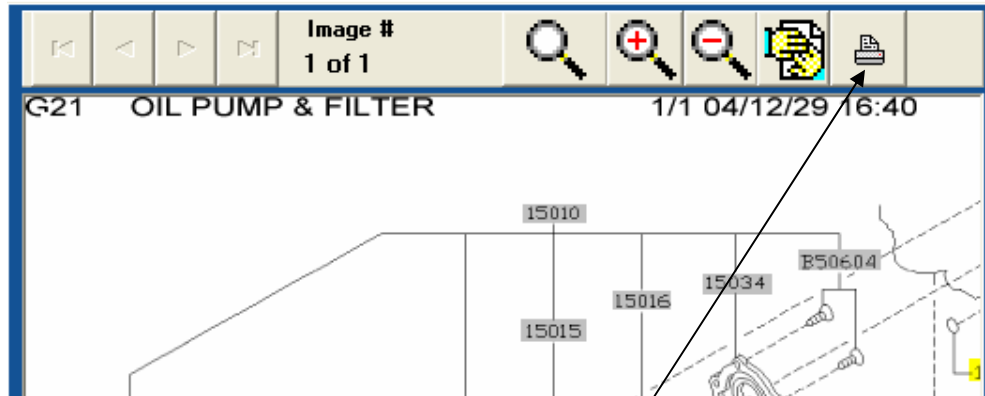
Send to DMS.

This option works together with *DataBridge* to provide a link to your dealership's Dealer Management System. The main purpose of this feature is to allow checking of part availability in inventory.

Call the Support Line for help in setting this up.

11 Printing Illustrations

At anytime, you can print an Illustration that is displayed.



Click on the Printer Icon in the toolbar.

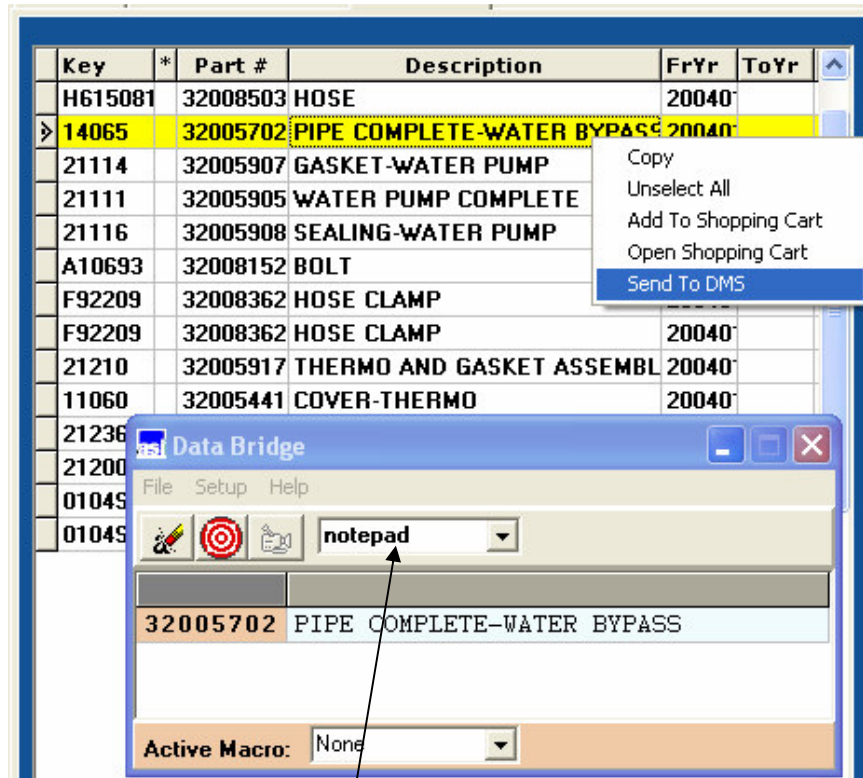


Image Size – Will print the Illustration in it's actual size (small).

Paper Size – Will print the illustration using the entire width of the paper (large).

Using the DataBridge to Transfer Parts Catalog Information

The DataBridge is a unique tool that is exactly what the name implies. It is a bridge between the EPC and all other active applications including the various DMS applications, word processing, etc. By clicking the right mouse button while in the parts list, selecting Send to DMS, all parts highlighted will be placed in a special buffer linked to DataBridge.



Changing this information to correspond to the title of your installation's DMS part inventory system will allow Data Bridge to interface. Call us to help with your setup.